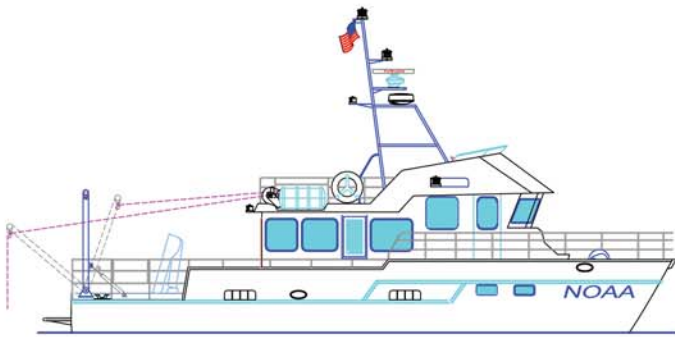


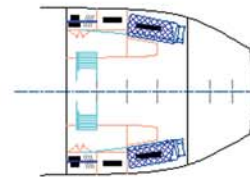
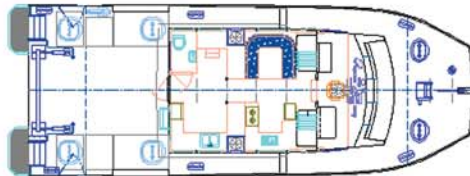
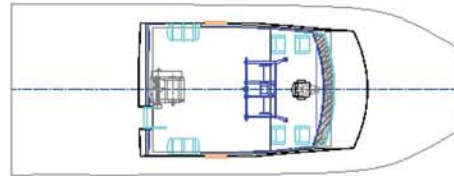


# NOAA 48'

The Next Generation in Catamaran Design



The 48' research vessel will operate in the Stellwagen Bank National Marine Sanctuary.



## SPECIFICATIONS

Length	48'
Beam	18' 6"
Draft	4' 8"
Passengers	N/A
Engines	Twin Cummins QSC8.3M490
Rating	484 hp / 2500 rpm
Fuel Capacity	600 gal
Propulsion	Osborne Props.
Speed	24 kn.
Construction	Aluminum - Marine Grade
Builder	All American Marine, Inc.
Designer	Teknicraft Design Ltd.
Launched	Spring 2006
Classification	N/A

The new 48' research vessel is a shorter version of the R/V Shearwater, the Channel Islands National Marine Sanctuary's state-of-the-art research catamaran. The new vessel will serve as an important new tool to enhance research and monitoring in the Stellwagen Bank National Marine Sanctuary. In addition to this role, the vessel will assist as an additional emergency response asset and will assist with on-the-water enforcement.

The vessel is being designed from the bottom up, built specifically to further on-going sanctuary management, research, education, and enforcement programs. The catamaran provides a stable, fast, roomy design ideal for short-duration trips out to the sanctuary, 20 miles offshore of Scituate, MA. The vessel will be an important asset to the sanctuary program and to the larger community, enabling sanctuary staff and collaborating institutions to conduct focused research, surveillance, and enforcement.

www.allamericanmarine.com

For more information, contact:

**All American Marine**

200 Harris Avenue

Bellingham, Washington 98225

Ph. 360.647.7602

Fx. 360.647.7607

Email: sales@allamericanmarine.com



CatFacts

